



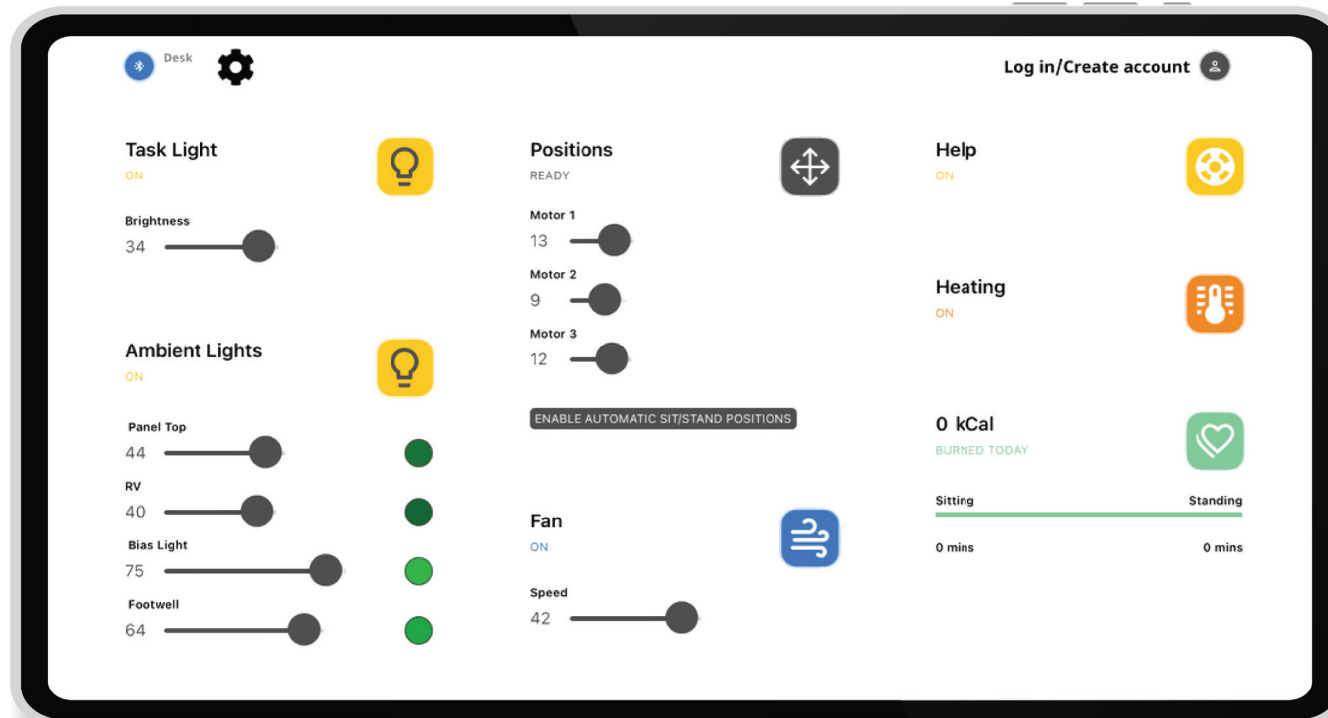
Task Lights

Dim or turn these lights on/off with a touch of the screen. They're an ideal way to provide additional light for your desktop.



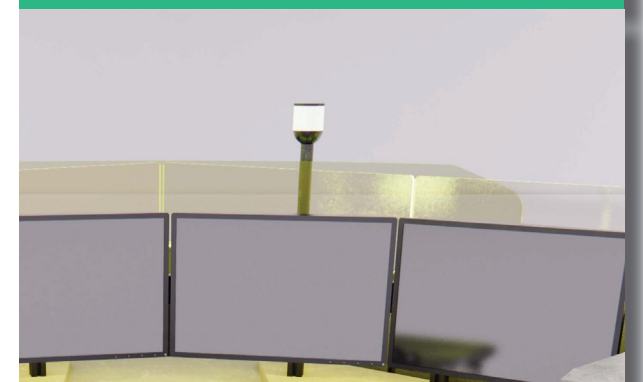
Ergonomic Console Adjustments

Set it and forget it. With an unlimited number of users, each person can easily program their favorite positions for sitting, standing, or any other need with customizable "scenes." Positions can be recalled instantly via a quick touch, and allow you to change positions throughout your shift.



Help/Status Light

One click on the always present Help tile will toggle the flashing red help light on your workstation.



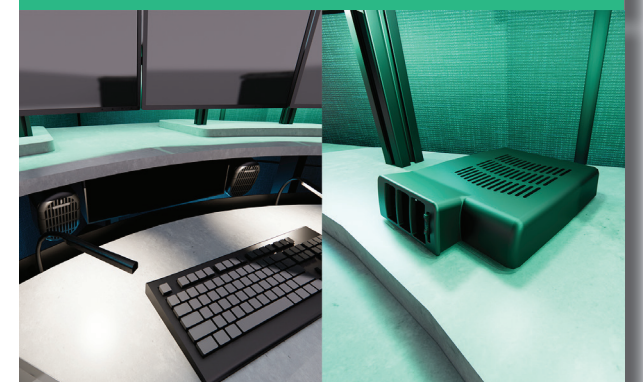
Ambient Lights - Panel Top

Light up the clear acrylic panel tops with the color of your choice. Customize your console with your logo or station ID via laser etching.



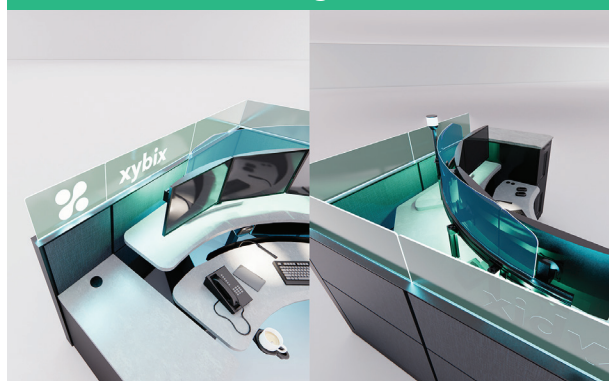
Heating/Cooling

Axys workstations can be equipped with two 250w heaters and a cooling fan to keep your staff comfortable. Heaters can adjust to warm your hands or feet. Fan speeds are fully customizable.



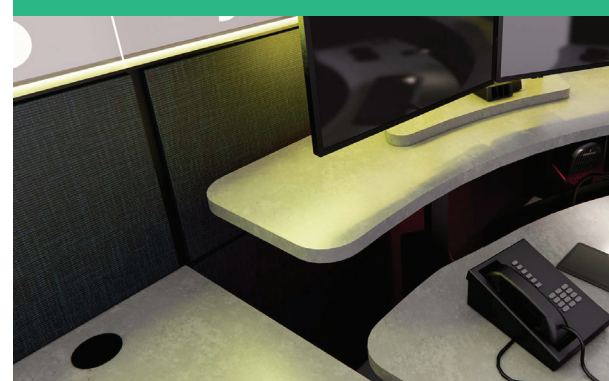
Ambient Lights - Monitor Arc

Light up the top of your monitors with this clear acrylic. The acrylic hides your monitors, provides easy station identification, and allows for custom color configurations.



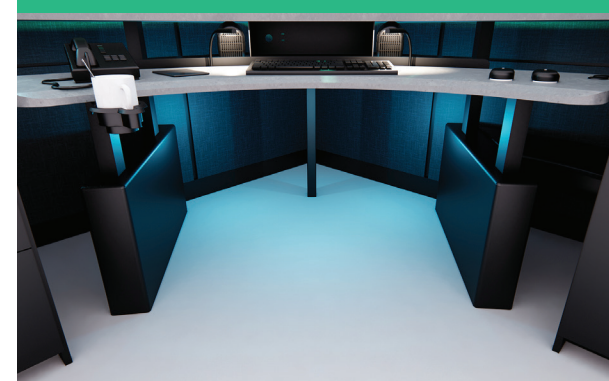
Ambient Lights - Bias Lighting

Bias lighting provides a glow beneath monitors to ease eye strain. Like all Axys lighting options, the color and intensity can be customized.



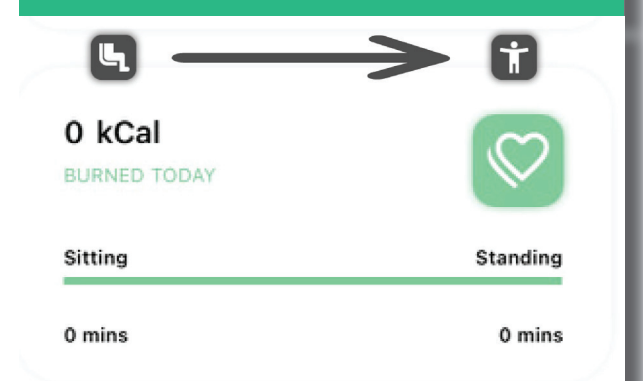
Ambient Lights - Undersurface

Give your workspace a space-age look with accent lighting that shines down into the footwell. Undersurface lighting pairs perfectly with bias lighting.



Calorie Counter

Standing burns more calories than sitting. Track the amount of calories you burn each day and set/track your goals via our handy calorie measurement tool.



Axys System Specifications

Voltage: Standard 110 volt power

Amps: 5 amps (with Heater) or 0.85 amps (without Heater)

Heater: Two (2) 250-watt ceramic heaters with vertical rotation for a total of 500 watts and 4.5 amps

Fan: One (1) low-voltage fan with adjustable speed

Lighting: Capacity to control up to five (5) lighting locations with unlimited color or brightness at 9 watts each

Lighting Locations: Task Lighting, Undersurface, Down Bias, Monitor Arc, and Panel Top

Lift Controller: Built-in support for unlimited lifts controlling three (3) lift systems

Profile Settings: Unlimited profiles available per station with unlimited settings per user

Help or Status Light: Priority-driven single tier with unlimited color selection or multi-tier banner light

Display: App-driven software available for desktop computer (Windows) or dedicated tablet / mobile device (iOS or Android)

Motion Detection: Motion detection to pause usage after 15 minutes with no movement

axys

by xybix

Introducing Axys from Xybix. Control every aspect of your workstation from a PC or tablet. Everything from the desk height to a variety of color settings and combinations is only a touch away.

Create your scene to go from one color scheme to another at the press of a button.

Create and save your favorite scenes for quick and easy recall.

