



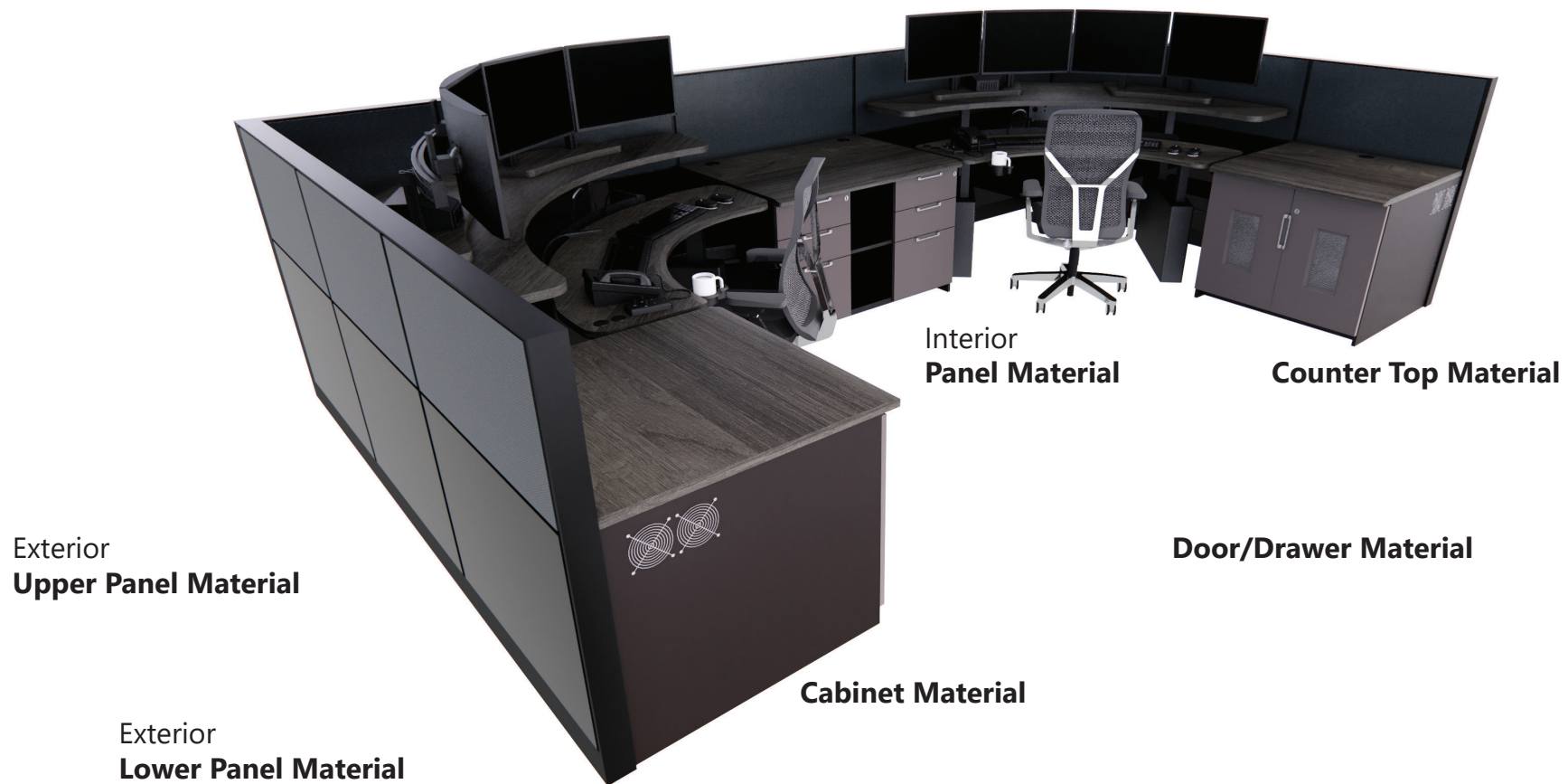
# FINISH & CARPETING OPTIONS

2024 SELECTIONS





# SAMPLE WORKSTATION





# COUNTER TOP MATERIALS

**Choose One  
From Any of These  
Counter Top Materials:**



## 3D Laminate Options:



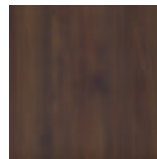
**RIVIERA OAK  
MISTRAL**



**RIVIERA OAK  
MONACO**



**RIVIERA OAK  
CASSIS**



**COLUMBIA  
WALNUT**



**TAFISA SMITHY  
STREET**



**SAHARA  
STONE**



**ROCK  
CONCRETE**



**ROCK  
ASH**



# CABINET MATERIALS

---

**Choose One  
From Any of These  
Counter Top Materials:**



**Melamine Options:**



**EARTH**



**NUBIAN  
BROWN**



**STORM**



**BLACK**



# DOOR/DRAWER MATERIALS

Choose One  
From Any of These  
Counter Top Materials:



Door/Drawer  
Front

3D Laminate  
Options:



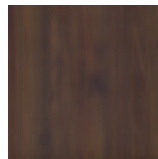
RIVIERA OAK  
MISTRAL



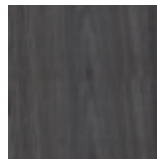
RIVIERA OAK  
MONACO



RIVIERA OAK  
CASSIS



COLUMBIA  
WALNUT



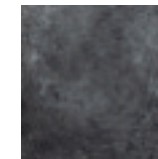
TAFISA SMITHY  
STREET



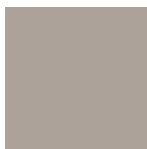
SAHARA  
STONE



ROCK  
CONCRETE



ROCK  
ASH



MATTE  
LINEN



MATTE  
FOLKSTONE



MATTE  
CHARCOAL



MATTE  
BLACK



# PANEL MATERIALS

## Choose up to 4 Panel Materials

You will need to choose materials for Exterior Upper, Exterior Lower, Interior Upper, and (optional) Interior Lower Panels. They can be any combination of 3D Laminate and/or fabric and can be the same or different from one another. Panel frames are black.

We also offer glass panel tiles and acrylic toppers to compliment your panel selections. Your designer can assist with these options.



## 3D Laminate Material Options:



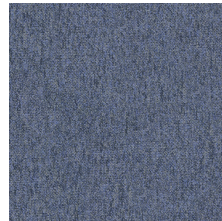
## Fabric Material Options:





# CARPETING OPTIONS

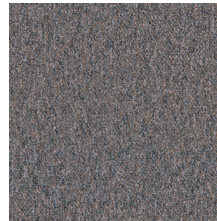
## STATIC DISSIPATIVE CARPET



COLUMBUS BLUE



CROCKETT



MAGELLAN



ADAMS



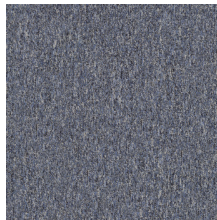
WASHINGTON



GALILEO



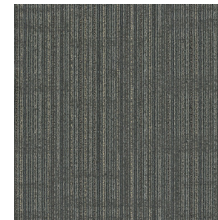
SHACKLETON GREY



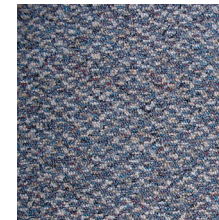
LIVINGSTONE



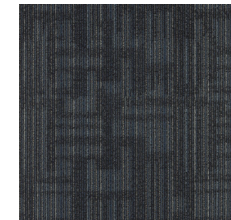
ROOSEVELT



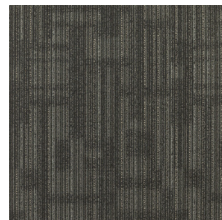
PENN



CORTEZ



WIGGLESWORTH



WHEATLEY



NIAGRA



SALT LAKE

## COVE BASE OPTIONS



BLACK



BLACK-BROWN



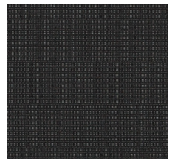
CHARCOAL

# SUGGESTED COLOR PAIRINGS



SHIFT AQUEDUCT

PANEL UPPER, INT/EXT (FABRIC)



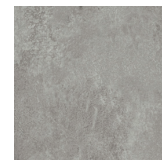
BINARY BLACK INK

PANEL LOWER (FABRIC)



WHEATLEY

CARPETING



ROCK CONCRETE

COUNTER TOP (3D LAMINATE)



MATTE LINEN

DOOR/DRAWER FRONT (3D LAMINATE)

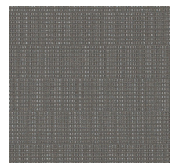


BLACK

CABINET (MELAMINE)

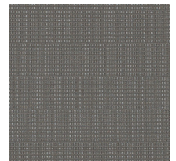


# SUGGESTED COLOR PAIRINGS



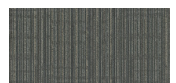
BINARY GRAPHITE

PANEL UPPER, INT/EXT (FABRIC)



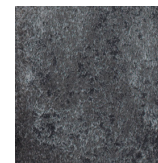
BINARY GRAPHITE

PANEL LOWER (FABRIC)



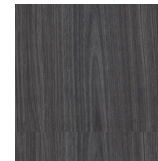
PENN

CARPETING



ROCK ASH

COUNTER TOP (3D LAMINATE)



TAFISA SMITHY STREET

DOOR/DRAWER FRONT (3D LAMINATE)



STORM

CABINET (MELAMINE)

# SUGGESTED COLOR PAIRINGS



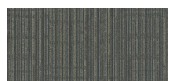
SHIFT AQUEDUCT

PANEL UPPER, INT/EXT (FABRIC)



AERIE INK

PANEL LOWER (FABRIC)



NIAGARA

CARPETING



RIVIERA OAK MISTRAL

COUNTER TOP (3D LAMINATE)



MATTE CHARCOAL

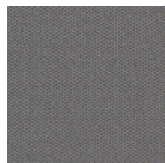
DOOR/DRAWER FRONT (3D LAMINATE)



STORM

CABINET (MELAMINE)

# SUGGESTED COLOR PAIRINGS



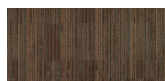
FOCUS SHADE

PANEL UPPER, INT/EXT (FABRIC)



SHIFT MUSHROOM

PANEL LOWER (FABRIC)



HOOVER

CARPETING



RIVIERA OAK CASSIS

COUNTER TOP (3D LAMINATE)



MATTE CHARCOAL

DOOR/DRAWER FRONT (3D LAMINATE)



NUBIAN BROWN

CABINET (MELAMINE)



# CARPET SIGN-OFF

## INSTRUCTIONS

- 1) Select one Carpet color and check box
- 2) Select one Cove Base color
- 3) Select one Installation Method
- 4) Sign and Date

## CARPETING

(Select One)

- |  |                                       |                                    |
|--|---------------------------------------|------------------------------------|
| <input type="checkbox"/> COLUMBUS BLUE   | <input type="checkbox"/> LIVING STONE | <input type="checkbox"/> SALT LAKE |
| <input type="checkbox"/> CROCKETT        | <input type="checkbox"/> ROOSEVELT    |                                    |
| <input type="checkbox"/> MAGELLAN        | <input type="checkbox"/> PENN         |                                    |
| <input type="checkbox"/> ADAMS           | <input type="checkbox"/> CORTEZ       |                                    |
| <input type="checkbox"/> WASHINGTON      | <input type="checkbox"/> WIGGLESWORTH |                                    |
| <input type="checkbox"/> GALILEO         | <input type="checkbox"/> WHEATLEY     |                                    |
| <input type="checkbox"/> SHACKLETON GREY | <input type="checkbox"/> NIAGARA      |                                    |

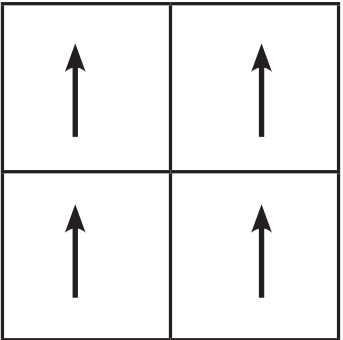
## COVE BASE

(Select One)

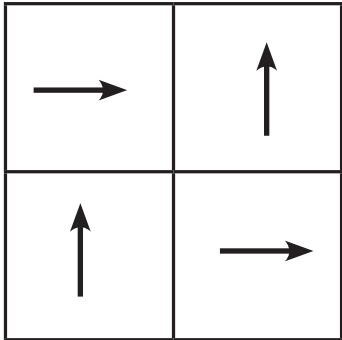
- ☐ BLACK
- ☐ BLACK-BROWN
- ☐ CHARCOAL

## INSTALLATION METHOD

(Select One)



☐ MONOLITHIC



☐ QUARTER TURN

Signature: \_\_\_\_\_

Date: \_\_\_\_\_

\*PHYSICAL SAMPLE HAS BEEN RECEIVED. ANY CHANGES TO THIS ORDER WITHIN THE 8 WEEK LEAD TIME WILL INCUR ADDITIONAL FEES.