



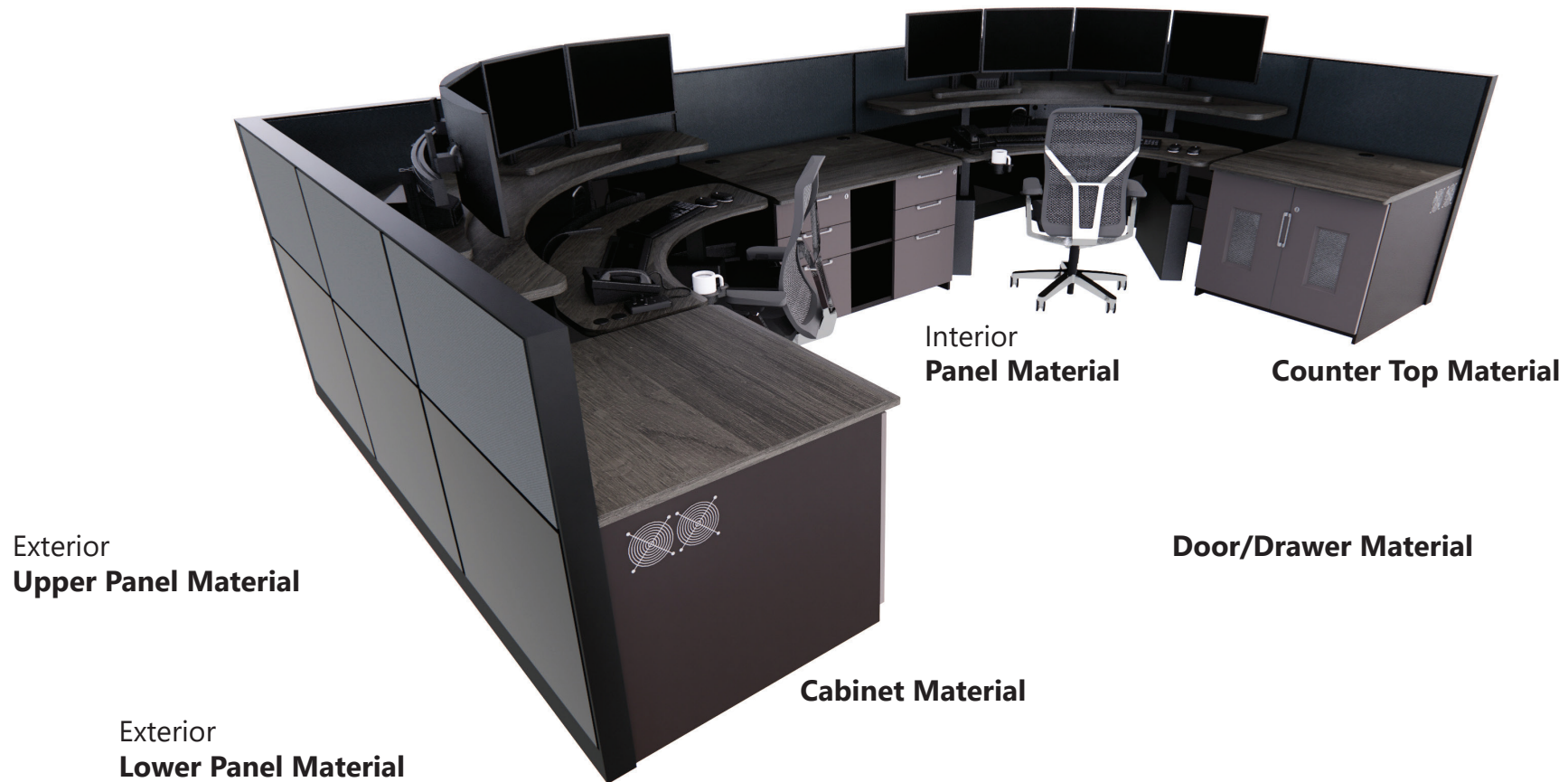
EAGLE LINE FINISH BROCHURE

2023 Finish & Carpet Collection





SAMPLE WORKSTATION





COUNTER TOP MATERIALS

**Choose One
From Any of These
Counter Top Materials:**



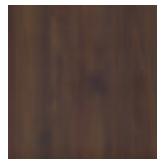
3D Laminate Options:



**RIVEIRA OAK
MISTRAL**



**RIVEIRA OAK
MONACO**



**COLUMBIA
WALNUT**



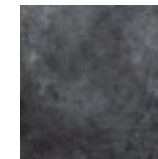
**RIVEIRA OAK
CASSIS**



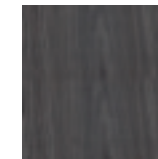
**SAHARA
STONE**



**ROCK,
CONCRETE**



ROCK, ASH



**TAFISA, SMITHY
STREET**



CABINET MATERIALS

**Choose One
From Any of These
Counter Top Materials:**



Melamine Options:



EARTH



**NUBIAN
BROWN**



STORM



BLACK



DOOR/DRAWER MATERIALS

Choose One
From Any of These
Counter Top Materials:



Door/Drawer
Front

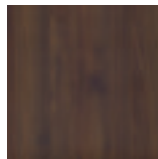
3D Laminate
Options:



RIVEIRA OAK
MISTRAL



RIVEIRA OAK
MONACO



COLUMBIA
WALNUT



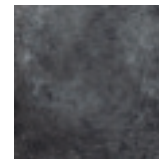
RIVEIRA OAK
CASSIS



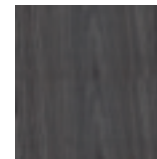
SAHARA
STONE



ROCK,
CONCRETE



ROCK, ASH



TAFISA, SMITHY
STREET



MATTE LINEN



MATTE
FOLKSTONE



MATTE
CHARCOAL



MATTE
BLACK

PANEL MATERIALS

Choose up to 4 Panel Materials

You will need to choose materials for Exterior Upper, Exterior Lower, Interior Upper, and (optional) Interior Lower Panels. They can be any combination of 3D Laminate and/or fabric and can be the same or different from one another. Panel frames are black.

We also offer glass panel tiles and acrylic toppers to compliment your panel selections. Your designer can assist with these options.



3D Laminate Material Options:



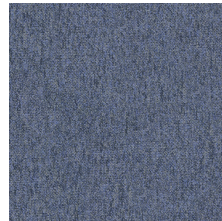
Fabric Material Options:





CARPETING OPTIONS

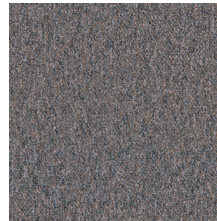
STATIC DISSIPATIVE CARPET



COLUMBUS BLUE



CROCKETT



MAGELLAN



ADAMS



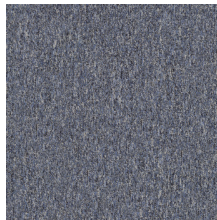
WASHINGTON



GALILEO



SHACKLETON GREY



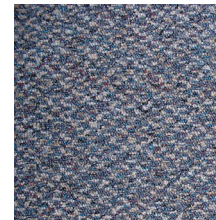
LIVINGSTONE



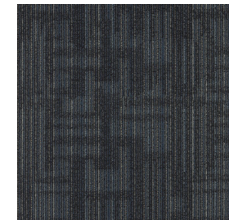
ROOSEVELT



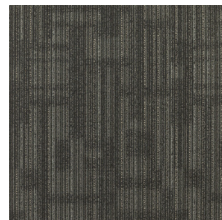
PENN



CORTEZ



WIGGLESWORTH



WHEATLEY



NIAGRA



SALT LAKE

COVE BASE OPTIONS



BLACK



BLACK-BROWN



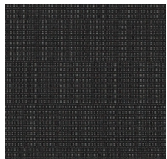
CHARCOAL

SUGGESTED COLOR PAIRINGS



SHIFT, AQUEDUCT

PANEL UPPER, INT/EXT (FABRIC)



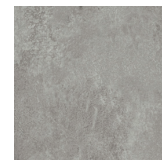
BINARY, BLACK INK

PANEL LOWER (FABRIC)



WHEATLEY

CARPETING



ROCK CONCRETE

COUNTER TOP (3D LAMINATE)



MATTE LUXE LINEN

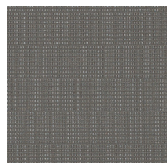
DOOR/DRAWER FRONT (3D LAMINATE)



BLACK

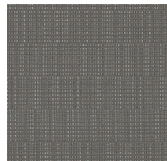
CABINET (MALEMINE)

SUGGESTED COLOR PAIRINGS



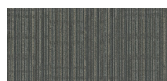
BINARY, GRAPHITE

PANEL UPPER, INT/EXT (FABRIC)



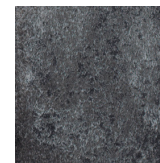
BINARY, GRAPHITE

PANEL LOWER (FABRIC)



PENN

CARPETING



ROCK ASH

COUNTER TOP (3D LAMINATE)



TAFISA, SMITHY STREET

DOOR/DRAWER FRONT (3D LAMINATE)



STORM

CABINET (MALEMINE)

SUGGESTED COLOR PAIRINGS



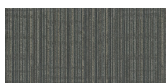
SHIFT, ADUEDUCT

PANEL UPPER, INT/EXT (FABRIC)



AERIE, INK

PANEL LOWER (FABRIC)



NIAGARA

CARPETING



RIVERA OAK, MISTRAL

COUNTER TOP (3D LAMINATE)



MATTE LUXE, CHARCOAL

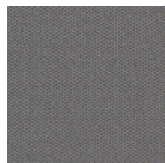
DOOR/DRAWER FRONT (3D LAMINATE)



STORM

CABINET (MALEMINE)

SUGGESTED COLOR PAIRINGS



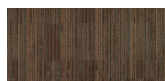
FOCUS, SHADE

PANEL UPPER, INT/EXT (FABRIC)



SHIFT, MUSHROOM

PANEL LOWER (FABRIC)



HOOVER

CARPETING



RIVERA OAK, CASSIS

COUNTER TOP (3D LAMINATE)



MATTE LUXE, CHARCOAL

DOOR/DRAWER FRONT (3D LAMINATE)



NUBIAN BROWN

CABINET (MALEMINE)



CARPET SIGN-OFF

INSTRUCTIONS

- 1) Select one Carpet color and check box
- 2) Select one Cove Base color
- 3) Select one Installation Method
- 4) Sign and Date

CARPETING

(Select One)

- | | | |
|--|---------------------------------------|------------------------------------|
| <input type="checkbox"/> COLUMBUS BLUE | <input type="checkbox"/> LIVING STONE | <input type="checkbox"/> SALT LAKE |
| <input type="checkbox"/> CROCKETT | <input type="checkbox"/> ROOSEVELT | |
| <input type="checkbox"/> MAGELLAN | <input type="checkbox"/> PENN | |
| <input type="checkbox"/> ADAMS | <input type="checkbox"/> CORTEZ | |
| <input type="checkbox"/> WASHINGTON | <input type="checkbox"/> WIGGLESWORTH | |
| <input type="checkbox"/> GALILEO | <input type="checkbox"/> WHEATLEY | |
| <input type="checkbox"/> SHACKLETON GREY | <input type="checkbox"/> NIAGARA | |

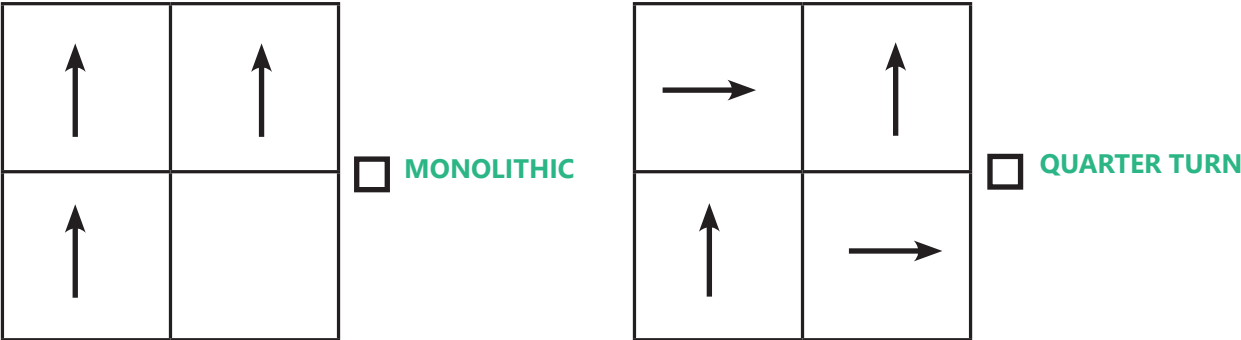
COVE BASE

(Select One)

- ☐ BLACK
- ☐ BLACK-BROWN
- ☐ CHARCOAL

INSTALLATION METHOD

(Select One)



Signature: _____

Date: _____

*PHYSICAL SAMPLE HAS BEEN RECEIVED. ANY CHANGES TO THIS ORDER WITHIN THE 8 WEEK LEAD TIME WILL INCUR ADDITIONAL FEES.