

Xybix Installation

**Red River Regional Dispatch Center
(RRRDC)**

Fargo, ND
April 30th – May 6th



RRRDC

300 Northern Pacific Ave. Suite #206



Before - Entry into Dispatch



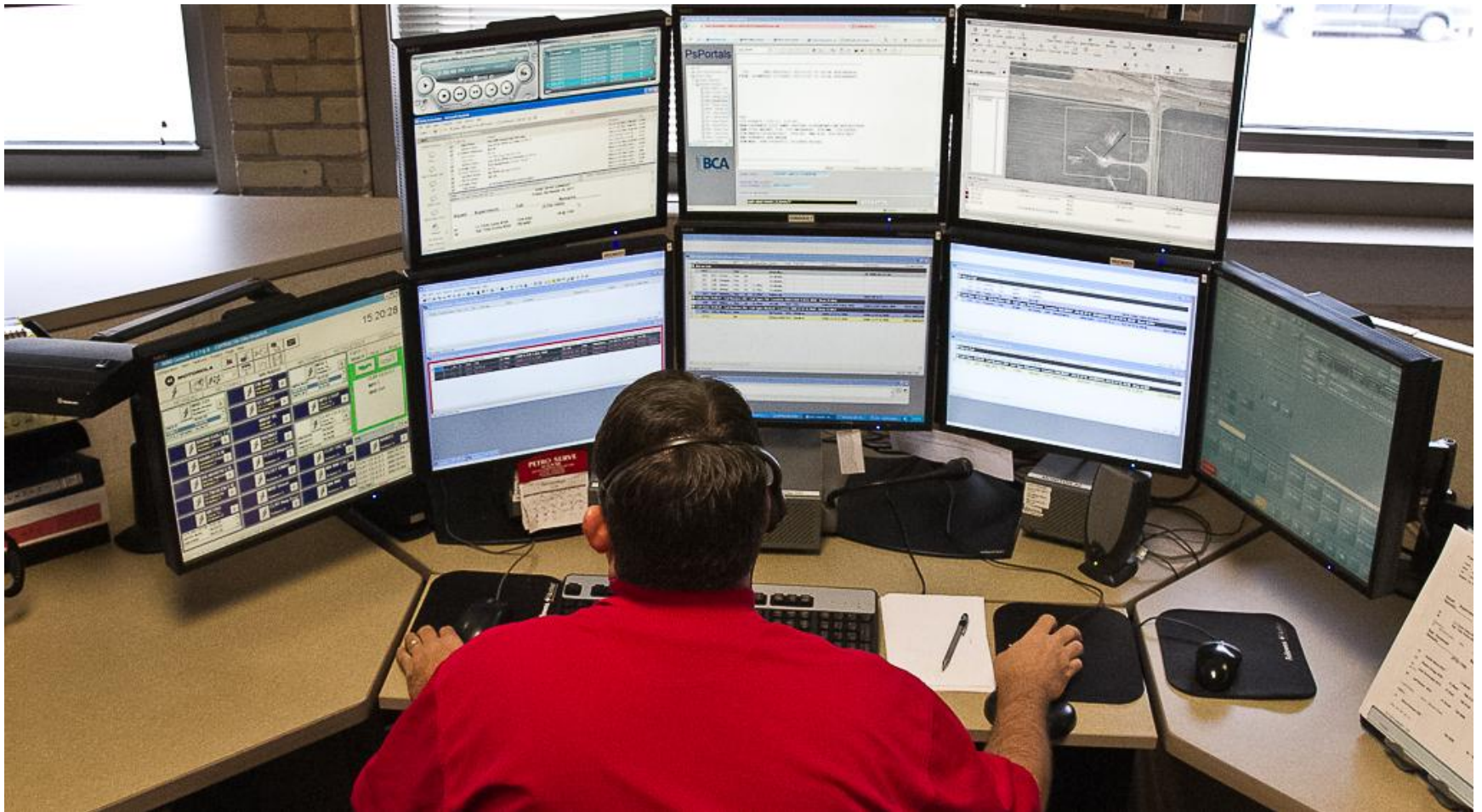
Before – Workstation #1



Before – Workstation #3



Before – Workstation #6



Before - Workstation #6



Before - Workstations 1-7



Before – Workstations 1-8



Before – Workstations 1-6



Before Workstations 2 - 6



Before Workstation #2



Before – Workstations 3 - 6



Delivery Day April 30th, 2013

0800 hours



Loading Dock Area



Unloading / Freight Elevator



Xybix Installation Crew

Supervisor Tim Majszak on the left



Staging Area (2nd Floor Conference Room)



Staging Area (2nd Floor Conference Room)



Staging Area (2nd Floor Conference Room)



U-Haul Used as Temporary Storage for the Old Workstations



Removal of Old Workstations



The First Changeover Workstation #8 Floor Wiring



Leveling the First Frame Going Up at Workstation #8



Floor Wiring for Workstation #1 next



Workstation #8 Lifts and Cable Management Systems



Workstation #1



Mid-States (Motorola) and RRRDC Employees work on the Radio Installation for Workstation #8



Workstation #2



Workstation #2



Workstation #1

All Hands on Deck

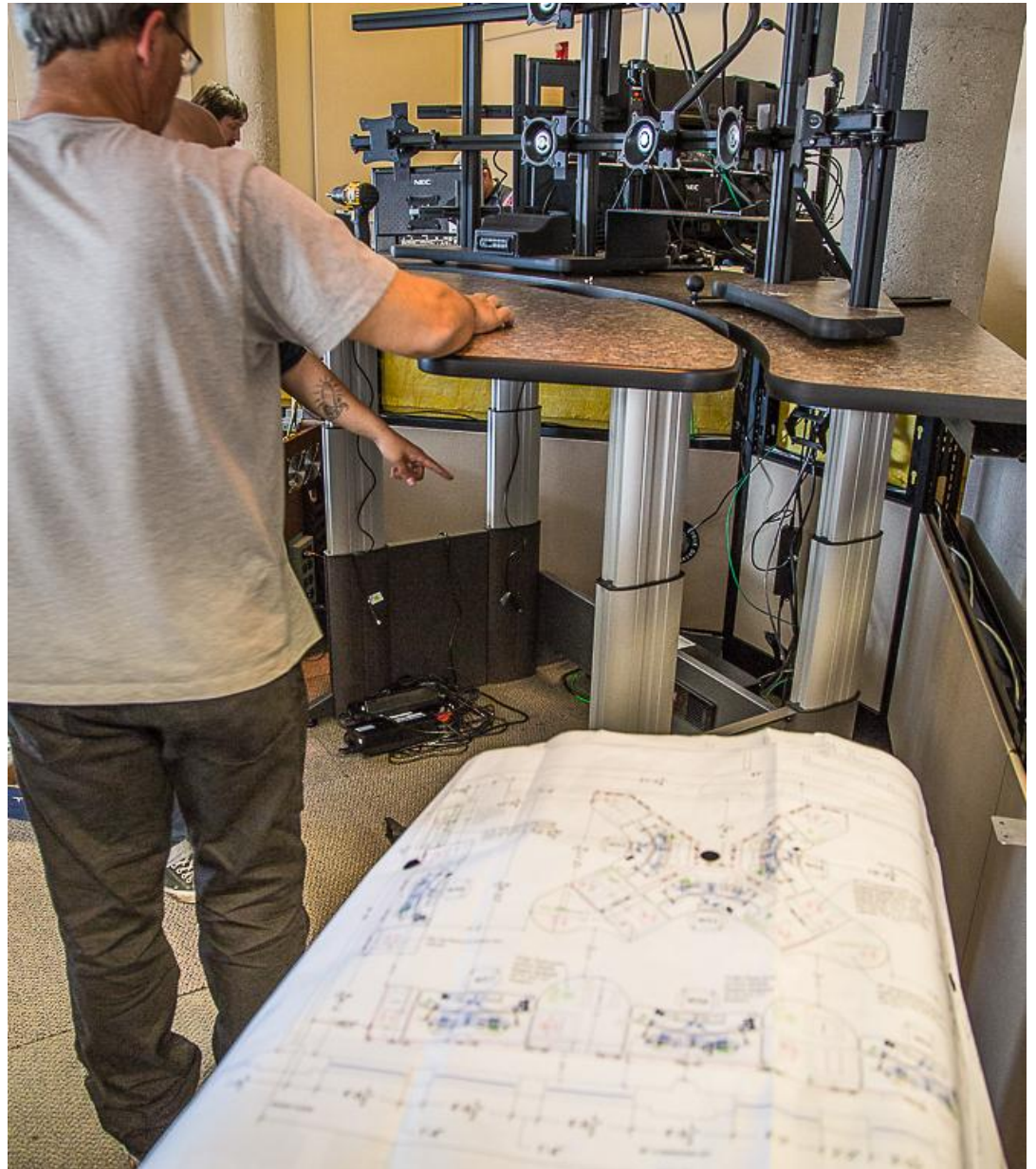
(Xybix, CenturyLink, Fargo IT, Mid-States, RRRDC)



Workstation #3 Begins



Following the Blueprints



Workstation #3

Cable Management Installation



Working on #3 and Preparing the wiring at #4



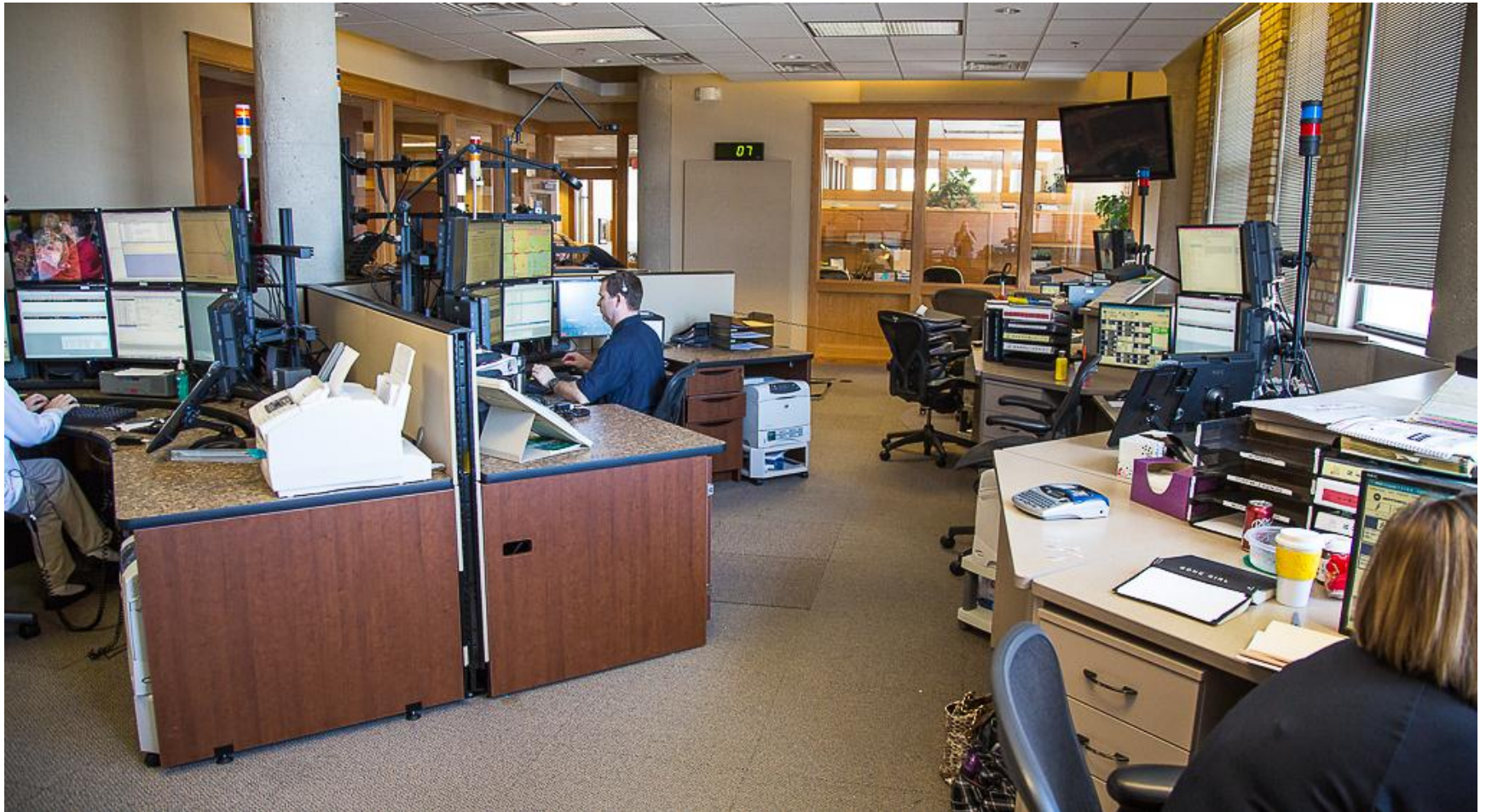
Old vs New

(During Live Install)

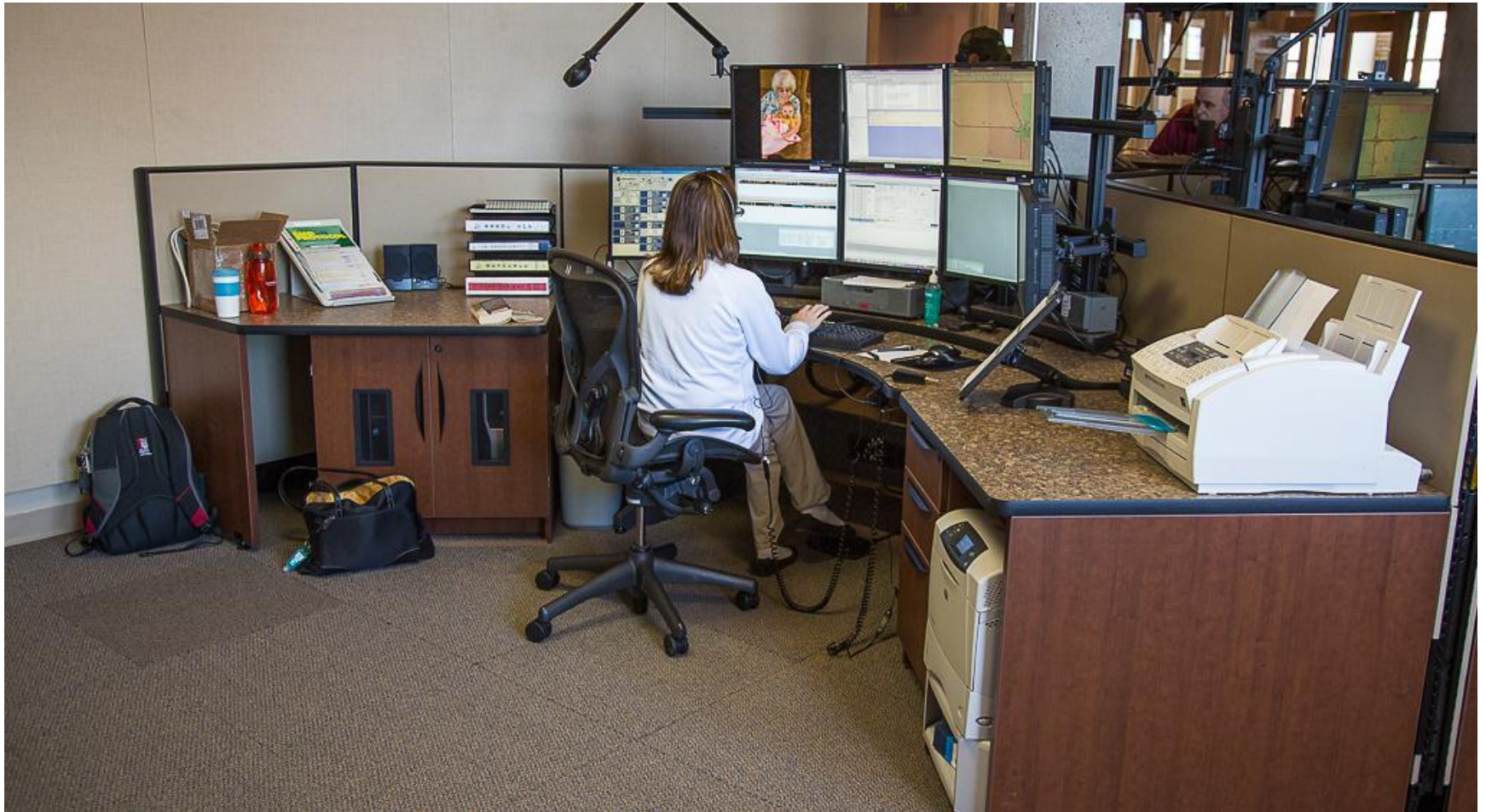


Old vs New

(During Live Install)



Workstation #1 Operational



Workstations 5-7



Workstation #4 Operational



Framing and Flooring at Workstation #7



Cable and Power Management

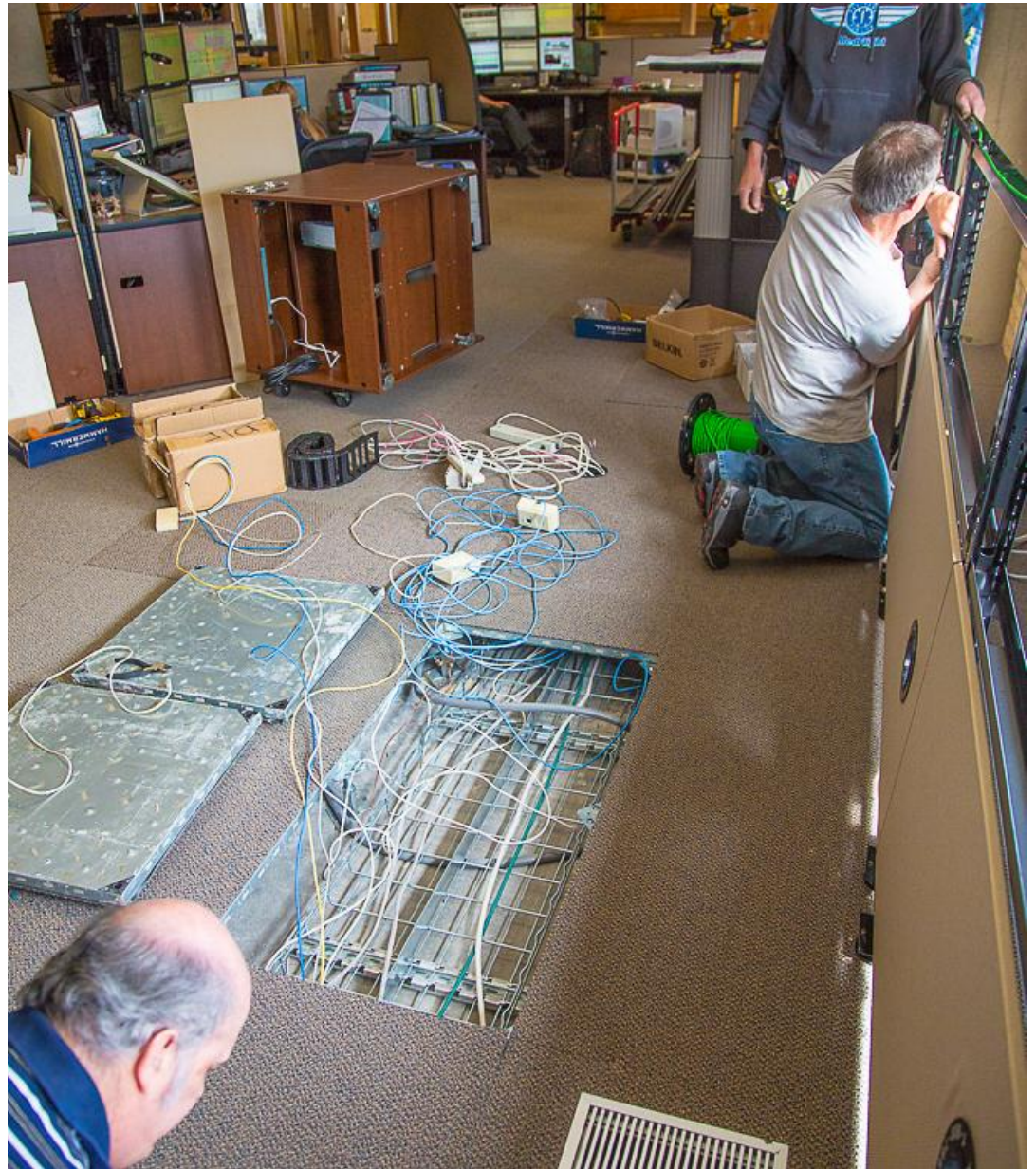


Staging the Old Equipment

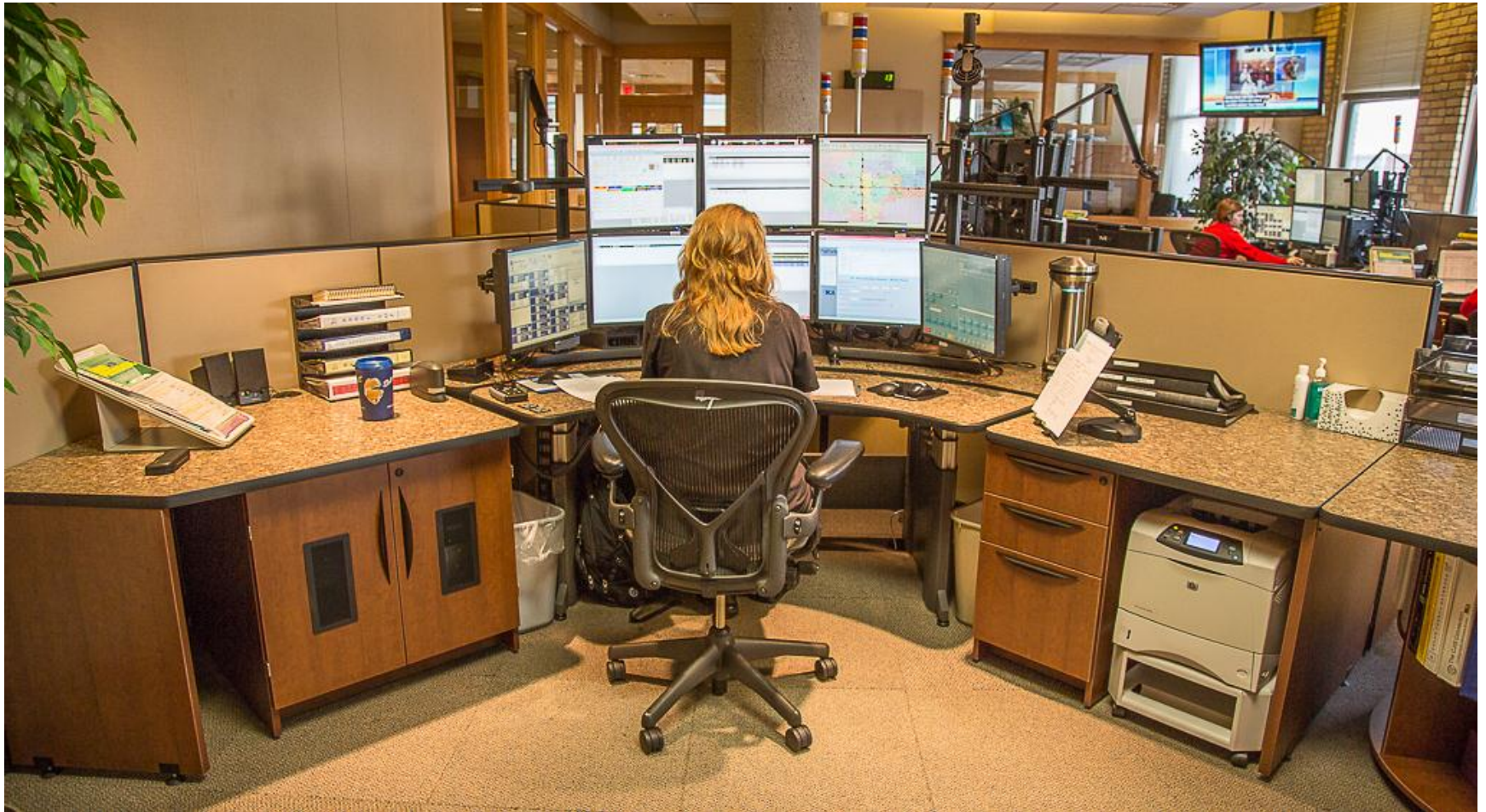


Workstations 6 and 7 being Framed

Floor wiring for #7 being laid out



Workstation #1



Workstation #2



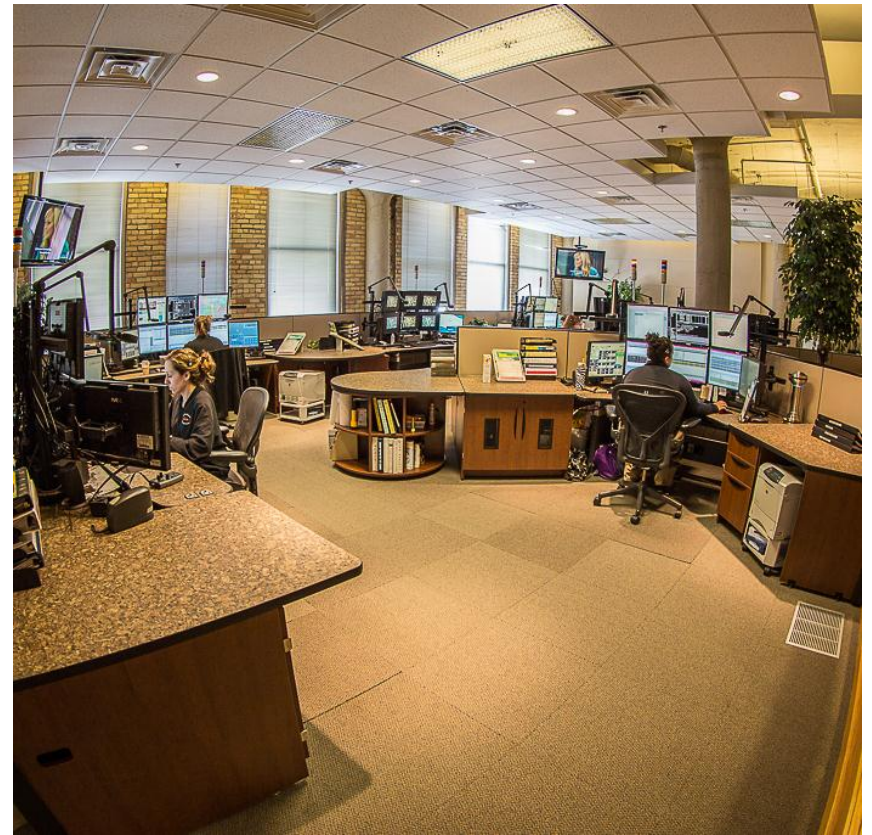
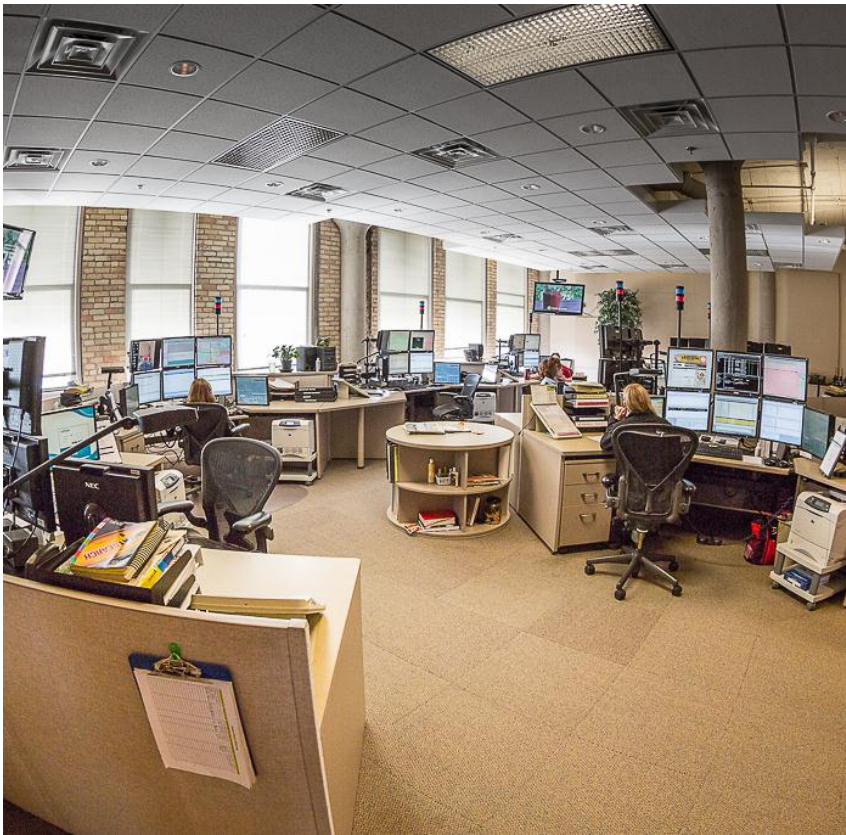
Workstations 2 - 6



Workstation #8



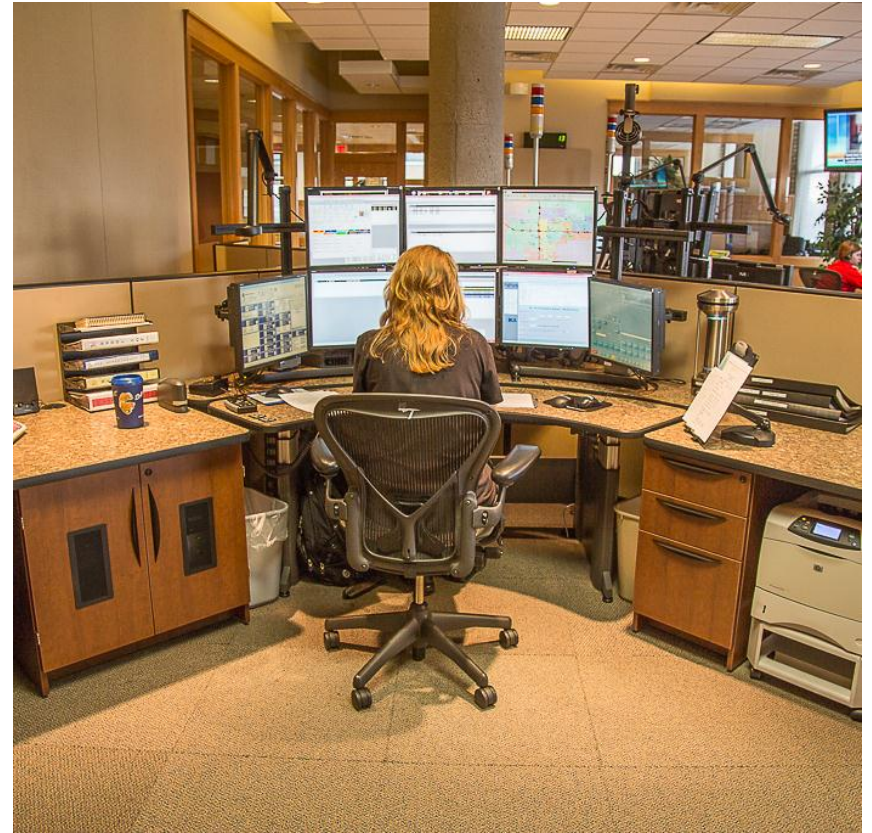
Before and After



Before and After



Before and After



Before and After



Before and After



Before and After



A View from Above







The Big Picture

All Eight Workstations Completed



Major Upgrades

(Ergonomics, Environmental, Technical, and overall Workspace)

- Power Monitor and Keyboard Lifts (up to 500 lbs static load, 360 lbs lift load, digital readouts)
- Collision detection on each lift surface
- RollerVision for focal distance adjustments with monitors
- Forced air heating at each workstation (1000 w)
- Forced air cooling fans at each workstation (with bi-directional louvers and speed control 0-50 CFS))
- Motion detectors to turn workstation features off when not in use
- Anti-bacterial laminate surfaces
- Anti-bacterial air purifiers at each workstation
- Premium insulated noise reduction panels
- Organized cable management systems
- Enhanced power management systems
- Vented and dual active ventilation fans for CPU cabinets
- 3-drawer pedestal with “soft-close” feature to reduce noise
- Slide out PC trays with task lighting for techs (lift tops)
- Data docks on keyboard surfaces for USB, PS2, RJ-11 and RJ-45 connections
- Dispatcher task lights that having dimming capability
- Increase in overall work surface area
- Additional floor clearance between workstations
- Overall increase in aesthetics